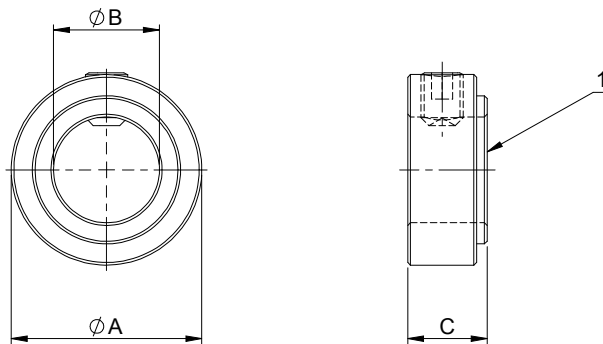


3.3.5 Adjusting collar & sliding sleeves • Dimension sheet

Adjusting collar

Adjusting collars secure profile shafts in the axial direction. They are secured with compression ring screws.



! Two adjusting collars are needed per profile shaft in order to secure both directions. Make sure that the adjusting collar is installed with the correct side (1) facing the gear-box housing (see drawing).

Adjusting collar for lifgo® & lean SL®	Unit	5.0	5.1	5.3
A	mm	Ø 30	Ø 36	Ø 70
B	mm	Ø 14	Ø 20	Ø 42
C	mm	15	15	20
Weight	kg	0,06	0,07	0,35

Article number	lifgo® & lean SL®	5.0	5.1	5.3
Adjusting collar		500 463	500 464	500 465