

3.3.7 Shaft adapter 1 and 2 & profile shaft adapter • Dimension sheet

Shaft adapter variants 1 and 2 act as rotationally rigid connectors between the gearbox and the profile shaft/gearbox.

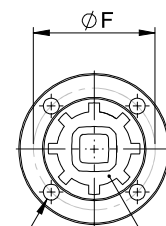
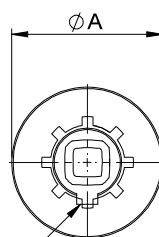
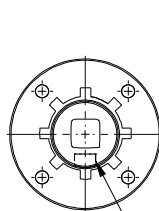
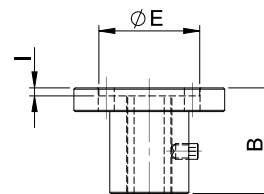
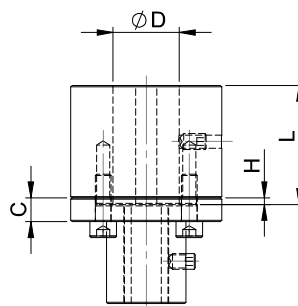
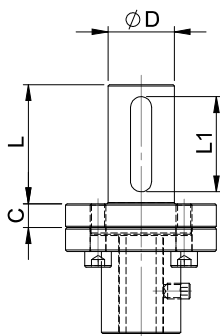
The profile shaft adapter is also available individually if the gearbox connection is to be established by the customer.



Shaft adapter Variant 1

Shaft adapter Variant 2

Profile shaft adapter



PFN
DIN 6885 P9

ϕG



The dimensions "D" and "L" and the variant, 1 or 2, are configured or selected by the customer.

Always add the dimensions "D = Ø ____ x L __L1" in mm and the variant V _ to the article number.

Shaft adapter/profile shaft adapter for lifgo® & lean SL®	Unit	5.0	5.1	5.3
A	mm	Ø 45	Ø 57	Ø 90
B	mm	28	40	65
C	mm	8	9	16
D	mm	as per customer data		
E	mm	Ø 28 H7 ↓2,5	Ø 38 H7 ↓3	Ø 58 H7 ↓4
F	mm	Ø 35	Ø 46	Ø 72
G	mm	Ø 5,3	Ø 6,2	Ø 10,5
H	mm	2	2,5	3,5
I	mm	2,5	3	4
L	mm	as per customer data		
L1	mm	as per customer data		
Torque max.	Mt Nm	40	152	954
Profile shaft	PW	PG 14	PG 20	KW 42
Weight variant 1	kg	0,27	0,63	2,56
Weight variant 2	kg	0,45	0,94	3,25
Weight PWA	kg	0,12	0,24	1,10

Article number	lifgo® & lean SL®	5.0	5.1	5.3
Shaft adapter variant 1	secured	500 455	500 456	500 457
Shaft adapter variant 2	secured	500 487	500 488	500 489
Profile shaft adapter	secured	500 483	500 484	500 485